

# Satelleyes

**A web-based tool for pinpointing Landsat satellites**

Abbie Dewhirst, Mathew Pellarin, Jeremie Bornais,  
Zain Raza, Jagraj Aulakh, Wahid Bawa

University of Windsor



# What is Satelleyes?

Satelleyes is a user-friendly web application that helps track Landsat satellite flyovers. Users can define target locations on our interactive map or input latitude and longitude coordinated to get flyover schedules. The application then provides flyover schedules and sends notifications to help plan ground-based observations in sync with satellite data collection.



# Core Features



## 01 User Management

Secure registration, login and logout for personalized access

## 02 Location Selection

Mark points directly on a map or manually enter coordinates

## 03 Flyover Alerts

Subscription-based email notifications for upcoming satellite passes

## 04 Data Export


Export flyover schedules in JSON format for easy record-keeping

## 05 Data Filtering

Apply cloud coverage thresholds and select data acquisition periods to suit specific research needs.

## 06 Metadata Access

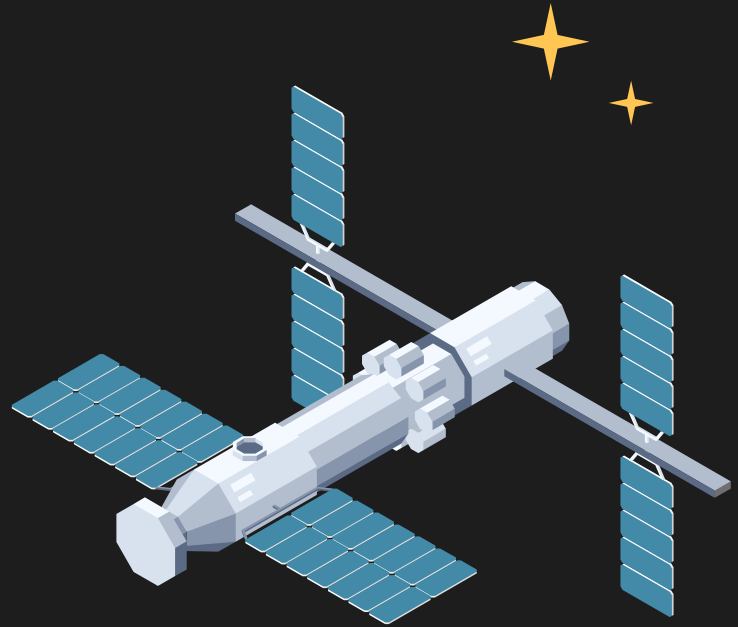
Access comprehensive scene metadata, including satellite information, date, time and more.



# Benefits & Real-World Applications

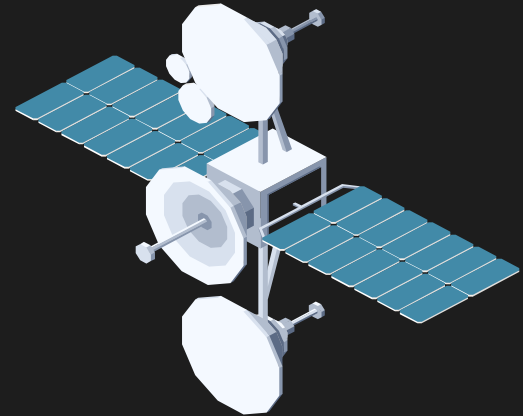
Why is it important?

- ★ Assists in monitoring Earth's changes by comparing ground conditions with satellite data.
- ★ Helps researchers, educators and enthusiasts access remote sensing data for better resource management.
- ★ Encourages scientific exploration and enhances understanding of environmental shifts.



# What Makes our Project Stand Out

- ★ User-Centric Design: Interactive map interface allows location selection by marking on a map or entering coordinates.
- ★ Customizable Alerts: Users can set lead times to receive tailored email updates.
- ★ Comprehensive Data: Access detailed metadata such as satellite type, date, time, and cloud coverage for more informed decision-making.



# Future Enhancements



## 01 Enhanced Notifications

Expand notification preferences to offer a more tailored and user-friendly alert system, including mobile notifications.

## 02 Automated Data Analysis and Reporting

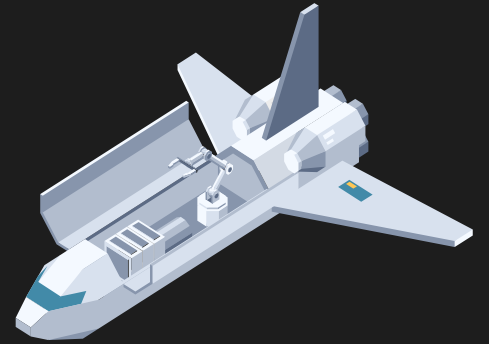
Integrate an automated analysis tool that processes satellite imagery and generated custom report.





# Want to experience our website for yourself?

Link: [nasa.matp101.com](https://nasa.matp101.com)



Note: You do not have to create a “real” account to try out our website! Any random email and password will work.

For the best user experience and to receive email alerts, you must have access to the email address you’ve entered.

